

# SURE NEWS



Sure House Mission Inc. 415 Egg Harbor Rd. Suite 15-113, Sewell, NJ 08085  
 Website: [www.surehousemission.org](http://www.surehousemission.org) Email: [surehousemission@gmail.com](mailto:surehousemission@gmail.com) Ph: 1-866-924-2677

## Message from the Founder

By Pastor Tim Bash

We can react to any situation with a variety of responses. It is all about perception and how we receive each situation that we encounter. This train of thought fits quite well in an encounter we had a few weeks ago. It was getting late on a Saturday night outing when we had one such encounter with a man at Suburban Station. When we first saw the man, he graciously accepted a bag lunch from us and left quietly. About three minutes later, he returned in a completely different manner. He began yelling, "Why are you feeding us this garbage? There is a peanut butter and jelly sandwich in this bag. You are killing us with all the salt and sugar in this food." The volunteers and I were quite surprised by this quick turnaround.

He was becoming increasingly upset and kept saying the same thing but getting louder and beginning to use profanity. After a moment of making his thoughts known, he began to walk away. I turned to the volunteers to tell them to ignore him, grab our things and leave. As we left, he followed us upstairs and out to the van. He began to say the same things and get loud again but now he is outside with us and the rest of the volunteers. Two volunteers and I began to talk with the man and calm him down. It took about 20 minutes before we could really talk with him. At that point, I reached into the van

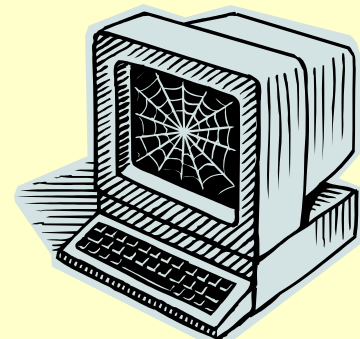
and grabbed a *Daily Bread*. I held it in front of the man and told him that this is the real reason we are here. The food, clothing, toiletries etc. are a means to build a bridge so that we can share Jesus and His love for him. At that moment we saw another drastic change in his attitude. As he choked back the tears, he began to tell us about himself. He is a diabetic that was recently released from prison. He has a lot of emotional hurt and pain in his life. We continued to talk for a short while and listen to him. He hugged each of us before he left. What an emotional roller coaster?!

The point to all of this is that it is all about perspective. When the events began to unfold, our initial reaction was to ignore him and quietly leave because we did not understand his perspective. After being almost forced to listen to him, we discovered his needs and the source of his being upset. Of course, the middle of the story would have been different if he were able to articulate his thoughts better. When some people are upset, they are not able to do so. Once we listened to his concerns, we had a different perspective and that allowed him to get a different perspective.

In Christ,  
 Pastor Tim Bash

## Sure House on the Web

Sure House Mission now has its own Facebook page. Check out this link <https://www.facebook.com/pages/Sure-House-Mission/397003060427396> and "like" our page so you can receive updates on what is going on with Surehouse. You can also visit our website at [www.surehousemission.org](http://www.surehousemission.org) to see other upcoming events and ways you can help out.



## Brrr! It's Feeling Like Winter!

By Wendy Sylvester

Donation Coordinator

Hello to all of our Volunteers and Supporters,

As we continue with the colder months, we are in urgent need of warmer items such as:

- Blankets, quilts, sleeping bags
- Men's comfortable clothing; jeans, casual pants, sweat pants
- Long sleeved shirts, flannels and sweat shirts
- Hoodies and Winter coats
- Hats and gloves
- Comfortable footwear; Sneakers, work boots and casual shoes
- New socks and new underwear
- Toiletries

Donations can be accepted by placing in the bucket in GCCC's lobby or by calling Wendy at 866-924-2677 to arrange for pick up. Anyone willing to have a clothing/supply drive, please contact Wendy.



## Outreach Update

By Brian Fullerton

Outreach Coordinator

If you would like to join us on any of our outings we meet at 8:15am at Gloucester County Community Church (GCCC) to go to Camden and at 6:30pm at GCCC to go to Philadelphia alternating Saturdays. If you have any questions regarding the outings, please contact Brian Fullerton at 1-866-924-2677 Ext. 41 or [brian.e.fullerton@gmail.com](mailto:brian.e.fullerton@gmail.com).

## Fundraiser Update and Future Events

By Barbara Bash

Fundraiser Coordinator

### We Want You...

We are currently looking to put together a team to work on activities to raise funds, raise awareness and bring our volunteers together for fun activities. There is a place for everyone. No matter what amount of time or talent you have. If you are interested or know of anyone please contact us.

### Upcoming events:

Keep an eye out for information about our upcoming annual fundraiser to be held on March 1<sup>st</sup> from 6PM to 9PM at the Mantua Fire Hall. Our guest speaker will be Pastor Tyrone Reeves, Sr. Come out, enjoy and be blessed.

# Upcoming Events

## MONTH of DECEMBER

Sunday	Monday	Tuesday	Wednesday	Thursday	Friday	Saturday
1	2	3	4	5	6	7 Camden Outing
8	9	10	11	12	13	14 Philly Outing
15	16	17	18	19	20	21 Camden Outing
22	23	24	25	26	27	28 Philly Outing
29	30	31 New Year's Eve				

## MONTH of JANUARY

Sunday	Monday	Tuesday	Wednesday	Thursday	Friday	Saturday
			1 New Year's Day	2	3	4 Camden Outing
5	6	7	8	9	10	11 Philly Outing
12	13	14	15	16	17	18 Camden Outing
19	20	21	22	23	24	25 Philly Outing
26	27	28 Leadership Mtg.	29	30	31	

## MONTH of FEBRUARY

Sunday	Monday	Tuesday	Wednesday	Thursday	Friday	Saturday
						1 Camden Outing
2	3	4	5	6	7	8 Philly Outing
9	10	11	12	13	14	15 Camden Outing
16	17	18	19	20	21	22 Philly Outing
23	24	25 Leadership Mtg.	26	27	28	